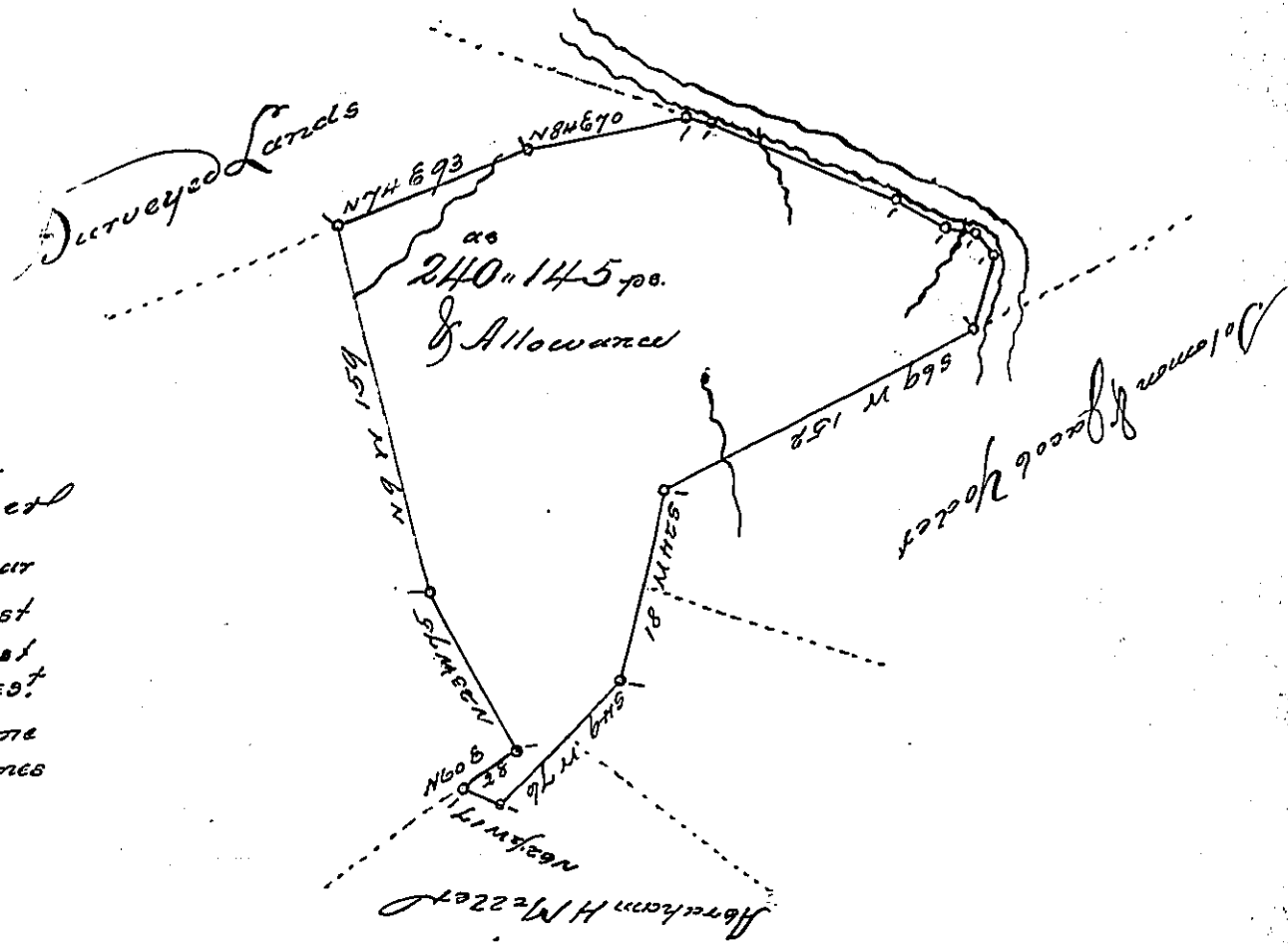


Courses up River

- S. 77. E. 12. Sugar
- S. 64. E. 88. post
- S. 58. E. 24.8 post
- S. 71. E. 12. chest
- S. 38. E. 13. Stone
- S. 21. W. 34. Stones



Situate on the South side of Castleman's River in Elklick Township Somerset County including an actual resident settlement and improvement & surveyed the 21st March 1836 in pursuance of a warrant to Rudolph Boose dated the 10th Feb'y 1836 for two hundred & forty acres.

To Jacob Spangler Esq.
 Surveyor General

per T. Gahagen D.S. S.C.

IN TESTIMONY that the above is a copy of the original remaining on file in the Department of Internal Affairs of Pennsylvania, made conformably to an Act of Assembly approved the 16th day of February, 1833, I have hereunto set my Hand and caused the Seal of said Department to be affixed at Harrisburg, this 5th day of November 1901

James W. Fatta
 Secretary of Internal Affairs.